

## **Appending and Merging Files from the File Manager**

Prepared By:  
Zara Makki  
Associate Engineer  
01 / 24 / 2022

*Softstuf Inc.*

US Domestic: 1-800-818-3463

International: 1-215-922-6880

Fax: 1-609-677-8736

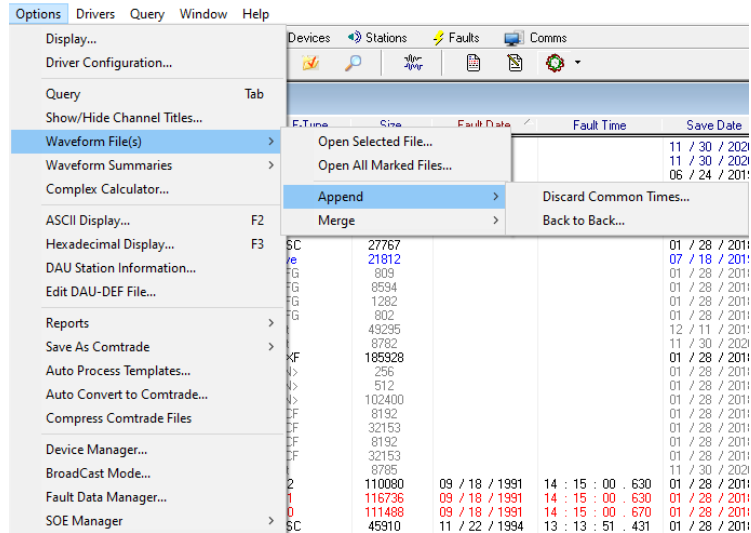
PO Box 40245 Philadelphia, PA 19106

[www.softstuf.com](http://www.softstuf.com)

## How to Append Files

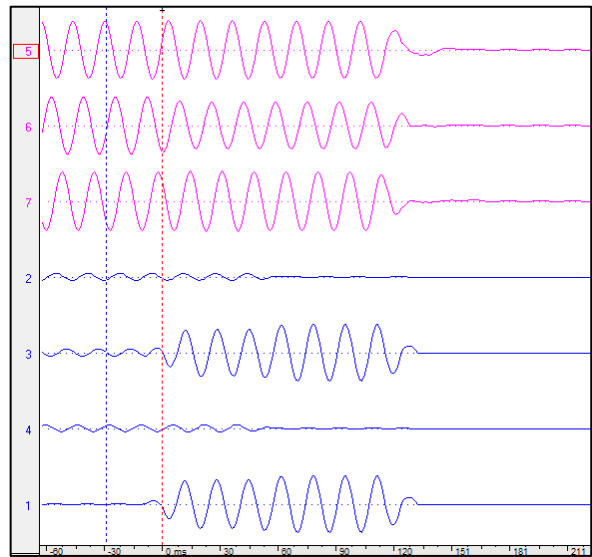
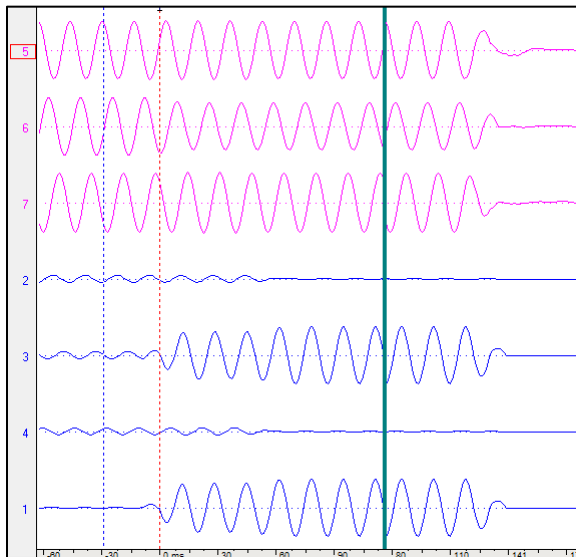
**Step 1:** Select up to 256 files to append. Select the Options menu and highlight Waveform File(s) then, Append as shown below.

The two options under Append are to Discard Common Times which will remove any duplicate recordings when attaching files and, Back to Back which attaches files without checking for duplicates.



**Step 2:** Select one of the options under Append.

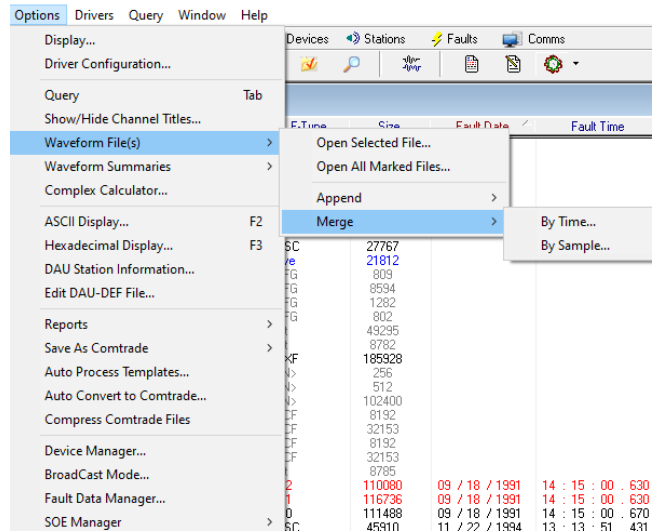
The image on the left below was created by appending files back-to-back in which a jump appears between the two files. The image on the right was created by appending files by discarding common times in which no jump appears.



## How to Merge Files

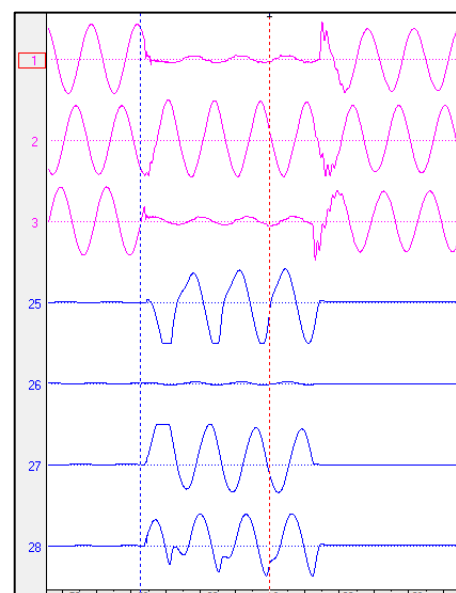
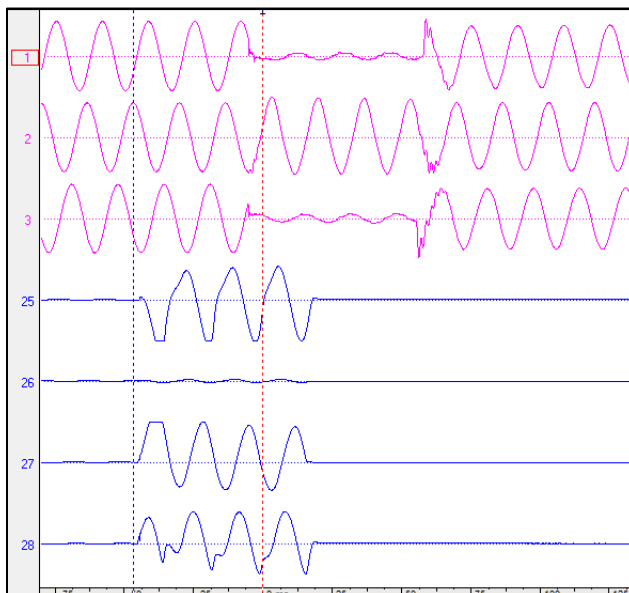
**Step 1:** Select up to 12 files to merge. Select the Options menu and highlight Waveform File(s) then, Merge as shown below.

Files can be merged by time or by sample. Merging files by time will ensure that the samples in each file will be aligned by time of recording. Similarly merging files by sample will align the files by number of sample.

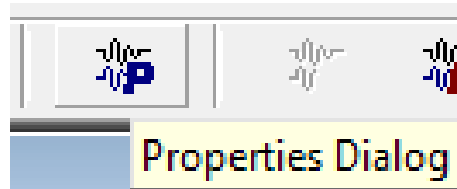


**Step 2:** Select one of the options under Merge.

Multiple channels from different files merged by sample are shown in the image on the left below. On the right are the same channels produced by merging the files by time.



**Note:** When appending files by discarding common times Wavewin provides the option to discard the common times from the oldest or latest file. When merging files each channel is automatically renamed so that the file name is in front of the channel name, Wavewin also provides the option to keep the original channel names. These options can be found under the properties shortcut on the toolbar shown below.



In the properties dialog box, the options can be selected under the Append / Merge tab.

